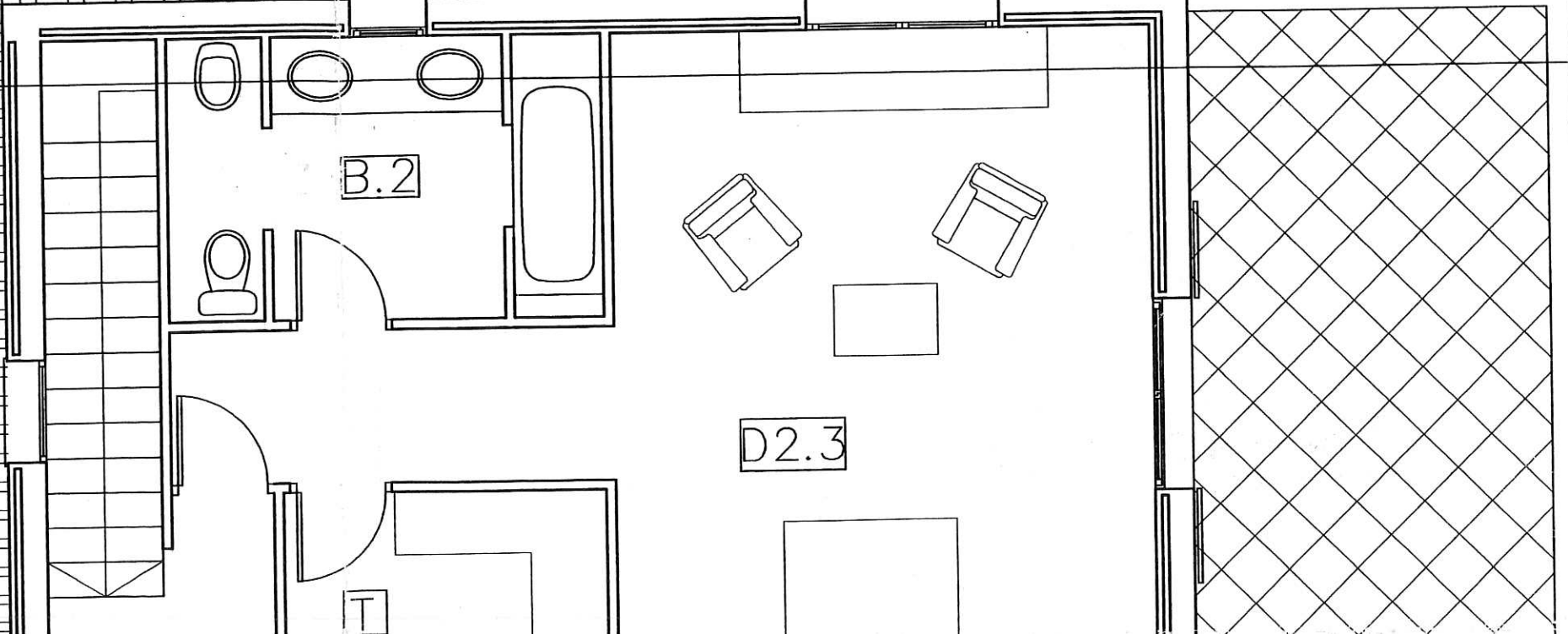
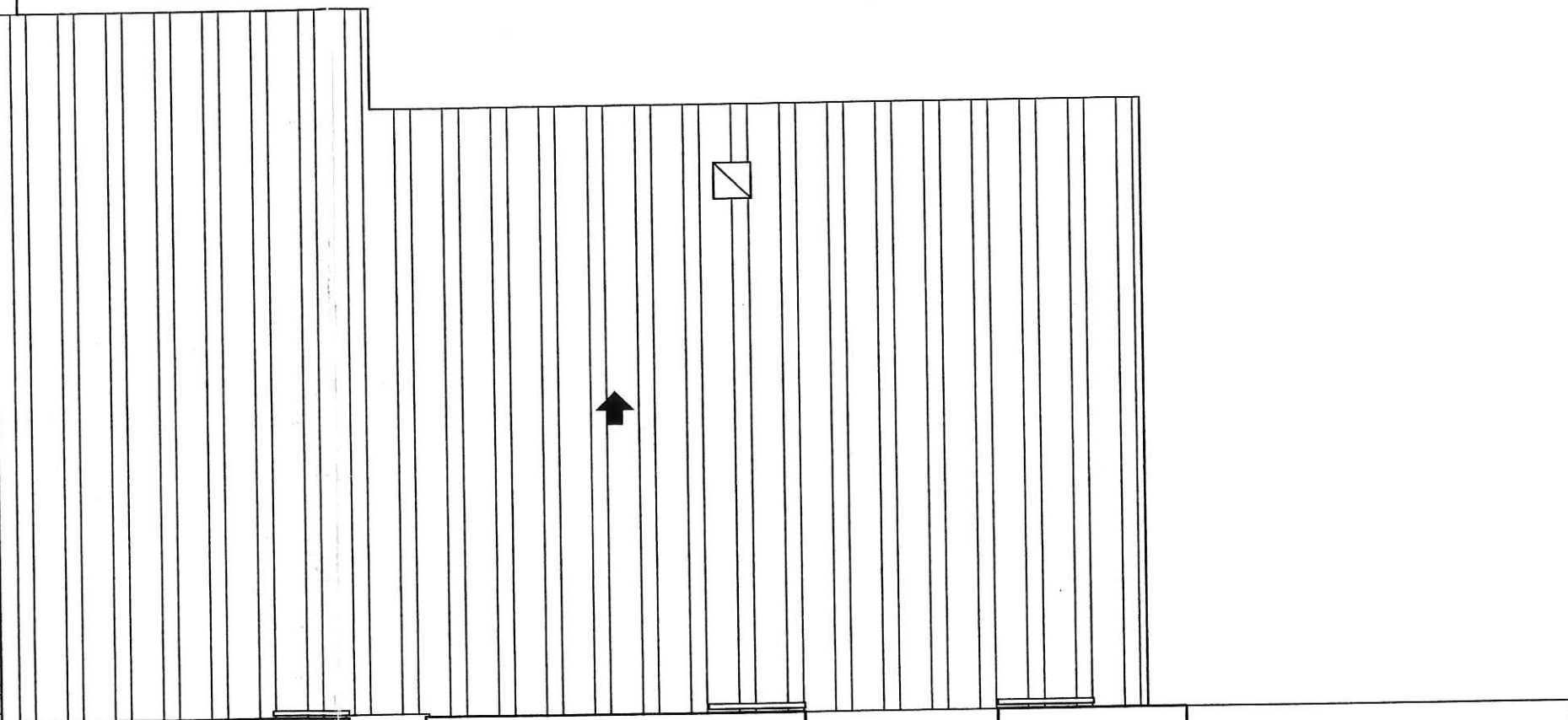
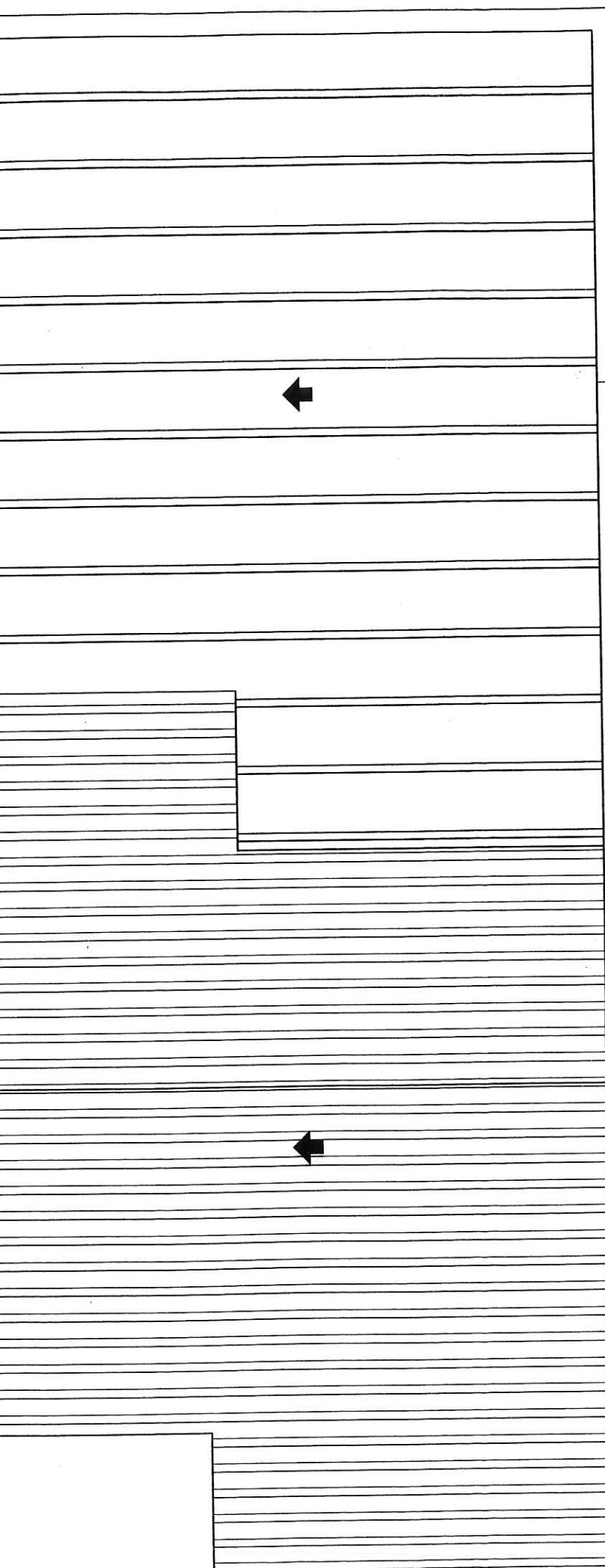




CUADRO DE SUPERFICIES CONSTRUIDAS

	CERRADA	50% TERRAZAS	25% PERGOLAS	TOTAL:
BAJA	186.69 m ²	8.08 m ²	11.01 m ²	205.78 m ²
ALTA	59.20 m ²	-----	-----	59.20 m ²
TOTAL:	245.89 m ²	8.08 m ²	11.01 m ²	264.98 m ²



↓
A