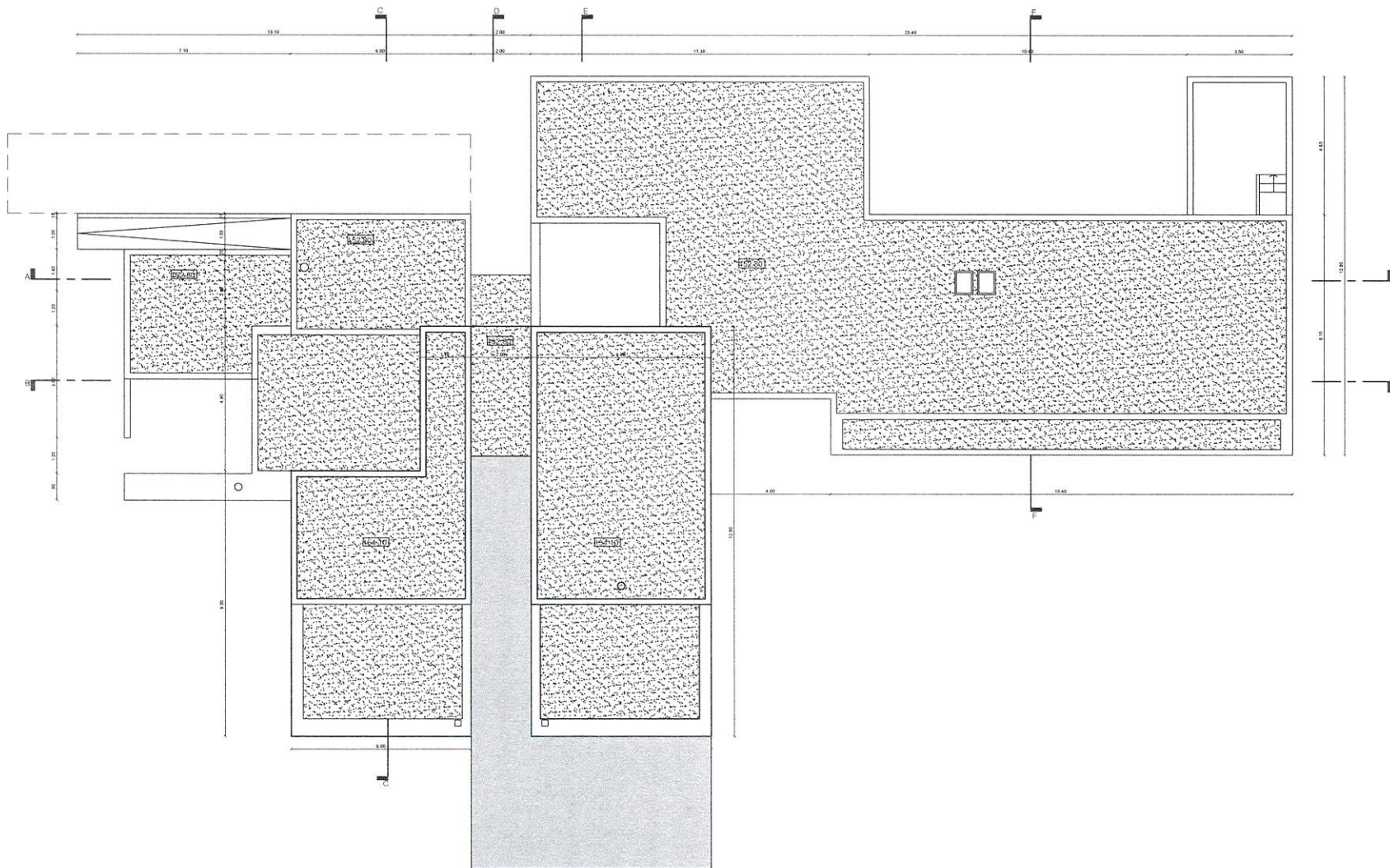
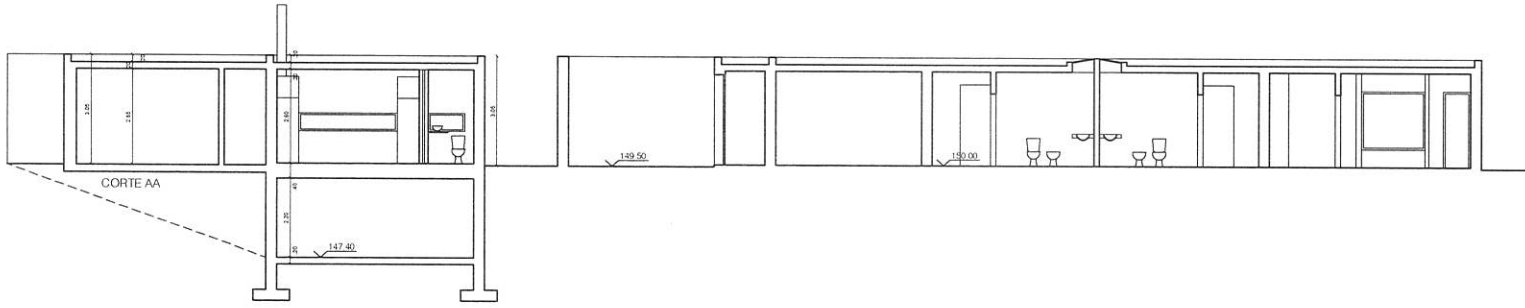


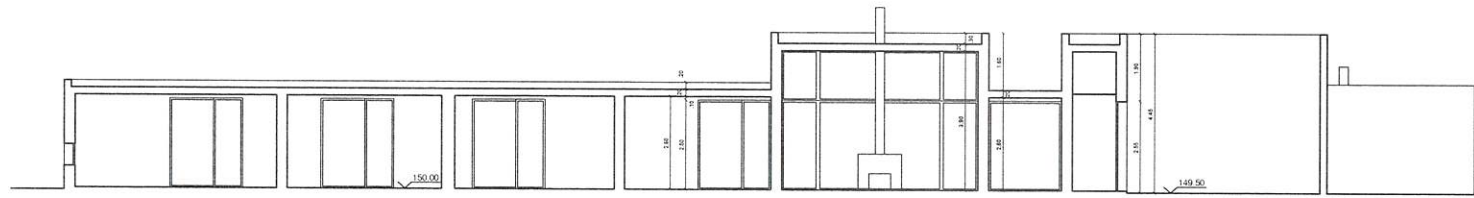
PLANTA



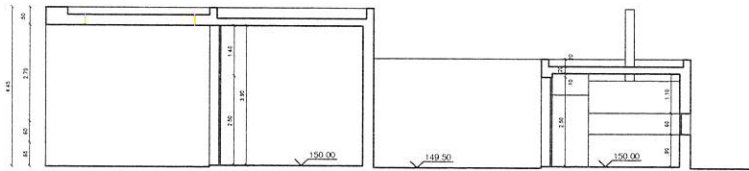




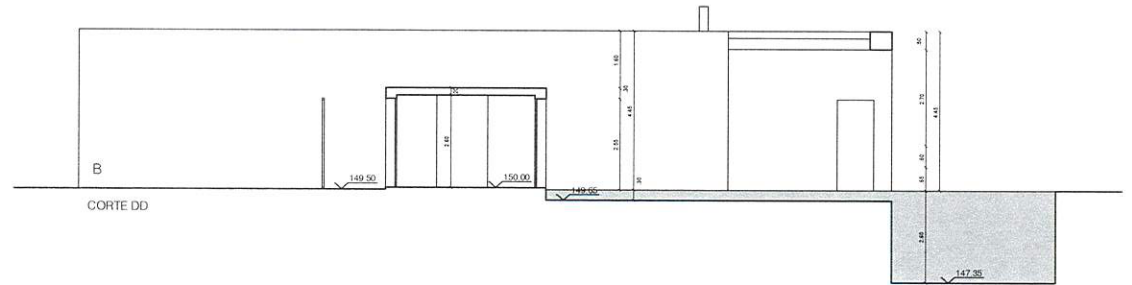
CORTE AA



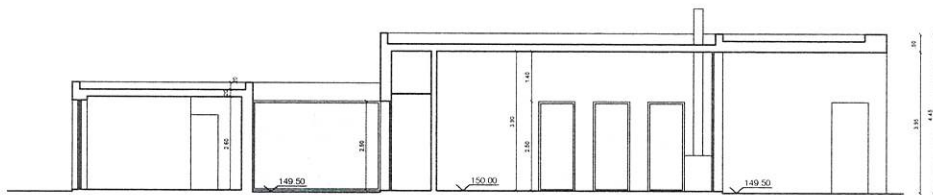
CORTE BB



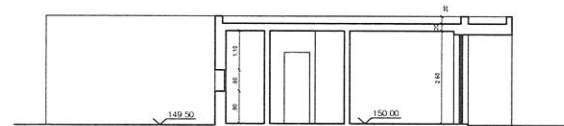
CORTE CC



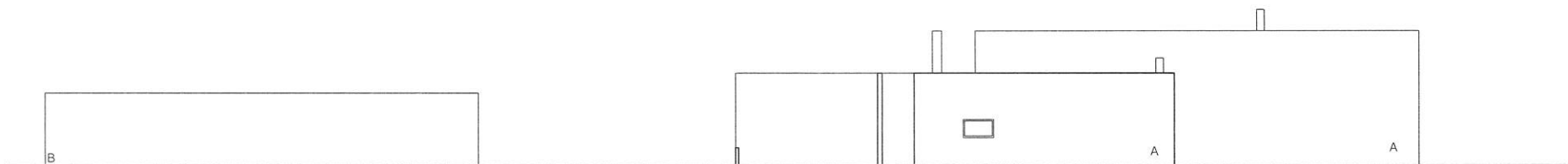
CORTE DD



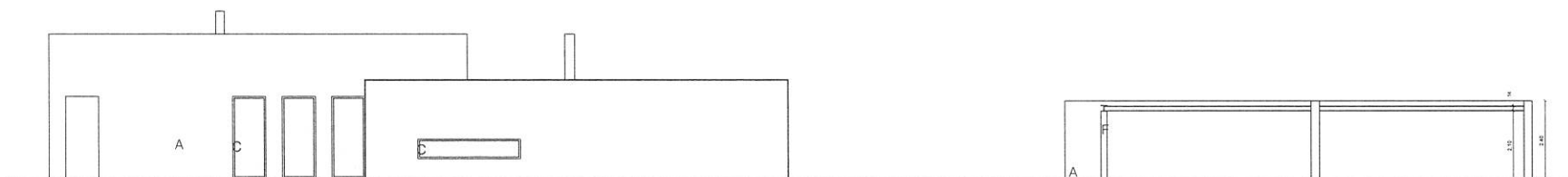
CORTE EE



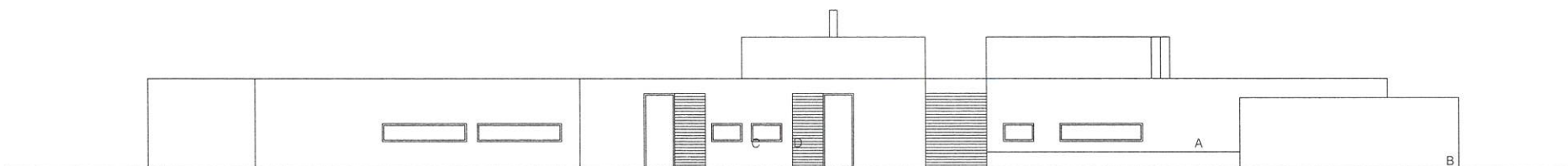
CORTE FF



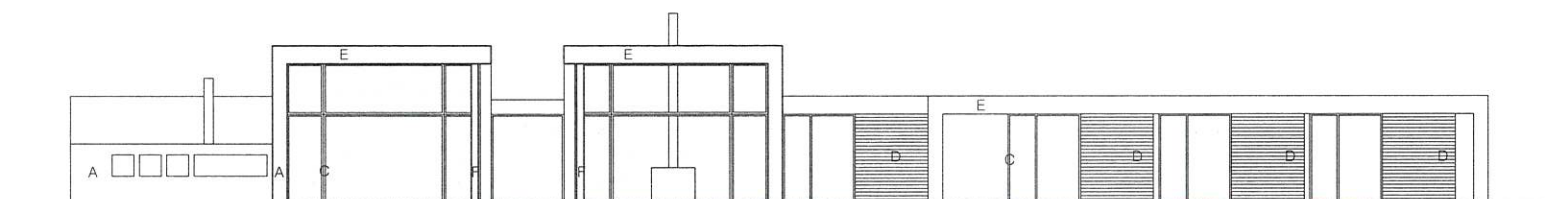
ALÇADO NORTE



ALÇADO SUL



ALÇADO NASCENTE



ALÇADO POENTE

LEGENDA:

- A - Reboco com pintura a tinta branco
- B - Revestimento a Xisto
- C - Caixilharia cõr Cinzento escuro com vidros duplos incolores
- D - Portadas metálicas de correr pintadas a esmalte cõr cinzento escuro
- E - Pérgolas em betão pintadas a tinta cõr Branco
- F - Estrutura metálica pintada a esmalte cõr cinzento escuro

